

STERLING COMPACT



COMPLIANT UP TO
CAT 7A

Sterling Compact is an economical and stylish three-compartment trunking, compact in size and designed to fit within areas that may have trunking height restrictions. Previously known as Mono Plus 20, the base design has been re-designed for independent access to each compartment.

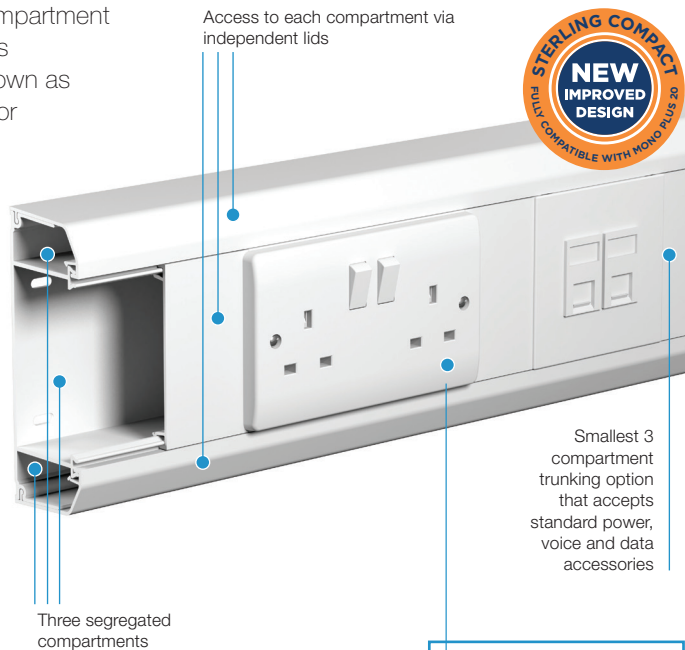
Product information

- 140 x 50mm
- New base configuration for ease of installation
- 1 main compartment and 2 smaller outer compartments
- Suitable for dado application
- Self extinguishing and non-flame propagating PVC-U
- Fire clips available to secure cables within trunking and prevent premature collapse in the event of a fire
- Fully compatible with the Mono Plus 20 range

Data information

- Compliant up to Cat 7a
- Standard bend radius 25mm

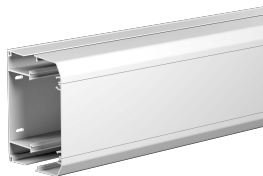
Standard Colour
WH
WH: White



Part M

For box assemblies and spacers that meet the requirements of Part M (DDA) please refer to main catalogue.

Basic components



Sterling Compact Trunking Assembly

code	Size	pack
EPM20WH	140 x 50mm 1 x 3m	



Trunking base (including 2 angled outer compartment covers)

code	pack
EMT20WH	4 x 3m



Main compartment cover

code	pack
ETL1WH	8 x 3m

Fittings



Coupler

code	pack
EC20WH	2



End cap

code	pack
EEC20WH	2



Internal bend

code	pack
EIB20WH	2



External bend

code	pack
EXB20WH	2



Flat angle - up/down

code	pack
EFA20WH	1

Fabricated



Flat tee - up/down

code	pack
EFT20WH	1

Fabricated

Components

**Main crossover bridge**

code	pack
EMCB1	5

Firefly clips

**Fire clip Sterling Compact centre compartment**

code	pack
FCM20C	100

Fire clip Sterling Compact outer compartment

code	pack
FCM200	100



Don't forget, Firefly clips to comply with the current edition of BS 7671 Wiring Regulations

See main catalogue for more information

Boxes and plates

***RCD/MCB Housing**

code	pack
EAHC1MWH	1

*Up to 4 modules can be accommodated
Note: RCDs are not supplied by Marshall-Tufflex

**1 gang accessory box**

code	depth	pack
ESSB1WH	30mm	20

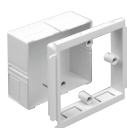
**2 gang accessory box**

code	depth	pack
ESSB2WH	30mm	10

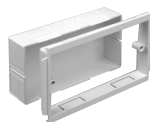
**Accessory box spacer**

code	size	pack
ES1WH	14mm	4

For use between accessory boxes

**1 gang adjustable depth box**

code	depth	pack
EAB1WH	32 – 47mm	10

**2 gang adjustable depth box**

code	depth	pack
EAB2WH	32 – 47mm	5

**1 gang accessory plate**

code	pack
ESSP1WH	2

**2 gang accessory plate**

code	pack
ESSP2WH	2

Please see main catalogue for more information on the range of adjustable boxes